

TYNESIDE

C I N E M A



FEBRUARY GUIDE

PAGES 4 - 6
NEW RELEASES

PAGE 7
REISSUES

PAGE 8
WORD SEARCH

PAGES 9 - 13
35MM QUIZ

PAGES 14 - 16
VALENTYNESIDE

PAGES 17 - 20
DAVID LYNCH: DREAM WEAVER

PAGE 21
TITLE CARD TRIVIA

PAGES 22 - 23
THE MEANING BEHIND THE FASHION IN MULHOLLAND DRIVE

PAGES 24 - 27
THE JAPAN FOUNDATION TOURING FILM PROGRAMME

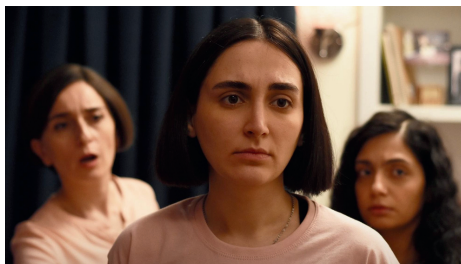
PAGES 28 - 30
SPECIAL EVENTS

PAGE 31
CROSSWORD



THIS FILM ZINE BELONGS TO:

FEBRUARY NEW RELEASES



The Seed of the Sacred Fig



15 | 2hrs 47m | Screening from 7 Feb

Mohammad Rasoulof's gripping domestic thriller is a profoundly courageous portrait of modern-day Iran through the prism of the 'Women, Life, Freedom' protests, as the family of an investigative judge are seized by the patriarchal grip of paranoia and spiralling social unrest.

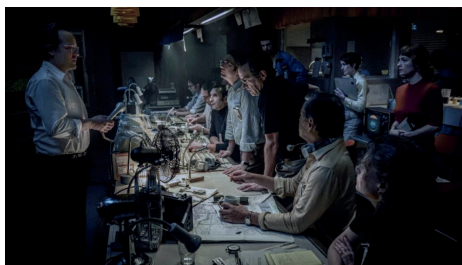


Becoming Led Zeppelin



12A | 2hrs 2m | Screening from 7 Feb

An Access-All-Areas documentary journey from director Bernard MacMahon, *Becoming Led Zeppelin* explores the origins of this iconic group and their meteoric rise in just one year against all the odds.



September 5



15 | 1hr 35m | Screening from 7 Feb

Peter Sarsgaard (*An Education*) and John Magaro (*First Cow*) lead this nerve-shredding historical drama from director Tim Fehlbaum, as an American sports broadcasting crew are thrust into live coverage of the hostage crisis unfolding at the 1972 Munich Summer Olympics.



Bring Them Down



15 | 1hr 46m | Screening from 7 Feb

Christopher Abbott (*Possessor*) faces off against Barry Keoghan (*Saltburn*) in this propulsive rural thriller from debut director Christopher Andrews, as a dispute between rival Irish farmers descends down a violent path for revenge.



Bridget Jones: Mad About the Boy



15 | 2hrs 5m | Screening from 13 Feb (Galentine's Day)

Renée Zellweger opens the diary once more for this irresistible sequel to the beloved Helen Fielding series, as Bridget - now widowed - navigates life as a screenwriter and single mother, with potential romance coming knocking in the form of Leo Woodall and Chiwetel Ejiofor.



Memoir of a Snail



15 | 1hr 35m | Screening from 14 Feb

A poignant wonder of stop motion animation from Academy Award winner Adam Elliot (*Mary & Max*), *Memoir of a Snail* is a heartfelt, hilarious chronicle of the life of an outsider finding her confidence - and silver linings - amongst the clutter of everyday life.

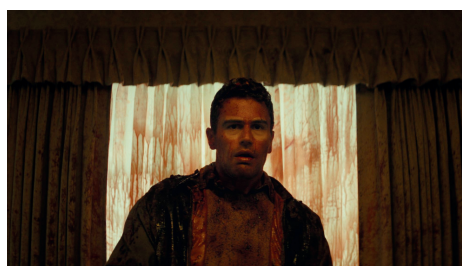


To a Land Unknown



15 | 1hr 46m | Screening from 14 Feb

The stakes couldn't be higher for displaced Palestinian refugees Chatila and Reda in this timely, knife-edge drama from director Mahdi Fleifel, which won Best Film in the World Cinema Competition at Galway Film Fleadh.



The Monkey



Certificate TBC | 1hr 40m | Screening from 21 Feb

Osgood Perkins (*Longlegs*) unleashes another blood-curdling cinematic nightmare with this gloriously gnarly Stephen King adaptation, as a wave of grisly deaths are set in motion after the unearthing a terrifying monkey toy.

FEBRUARY NEW RELEASES

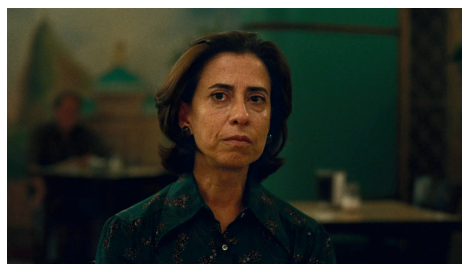


I Am Martin Parr



12A | 1hr 6m | Screening from Fri 21 Feb

This spirited documentary portrait from director Lee Shulman, featuring contributions from famous fans including Grayson Perry, pays tribute to one of the nation's most unique and mischievous photography talents: maverick disruptor Martin Parr.



I'm Still Here



Certificate TBC | 2hrs 15m | Screening from 21 Feb

Spearheaded by an extraordinary, Oscar-nominated central performance by Fernanda Torres, Walter Salles' stunning 70s-set drama spotlights the life of Brazilian matriarch Eunice Paiva as her family life is cruelly upended by a military dictatorship.

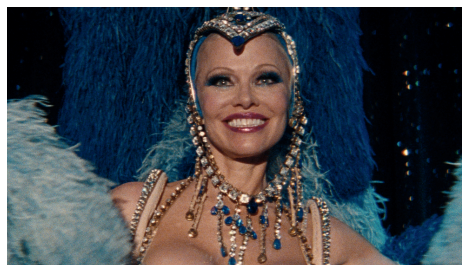


Last Breath



Certificate TBC | Runtime TBC | Screening from 28 Feb

Take a deep dive with Woody Harrelson, Simu Liu and crew for this nerve-shredding thriller, based on the inspirational true story of an odds-defying deep-sea rescue mission.



The Last Showgirl



15 | 1hr 28m | Screening from 28 Feb

The showstopping cinematic comeback of Pamela Anderson, Gia Coppola's poignant character study shines a spotlight on a Las Vegas dancer whose life unravels after the closure of her long-running revue show.

FEBRUARY REISSUES



Brief Encounter (80th Anniversary)



PG | 1hr 27m | Screening from 14 Feb

Returning to the Tyneside in celebration of its 80th anniversary, David Lean's classic wartime romantic drama charts the forbidden love affair between suburban housewife Celia Johnson and married doctor Trevor Howard after a chance meeting at a railway station.



Picnic at Hanging Rock (4K)



12A | 1hr 48m | Screening from 21 Feb

Peter Weir's adaptation of Joan Lindsay's novel has lost none of its mystique or mesmerising power, returning to the Tyneside in a dazzling 4K restoration for its 50th anniversary.

GODFATHER COMBO

£9.95

pepsi
330ml e

Popcorn

Maltesers

THE LIGHTER WAY TO ENJOY CHOCOLATE

Book at Box Office | Online: tynesidecinema.co.uk

FEBRUARY MOVIE WORD SEARCH

D	T	P	H	N	M	R	M	N	R	N	N	P	A
T	R	E	U	Y	L	E	E	W	I	W	M	E	B
K	R	I	I	E	A	T	M	O	M	O	M	I	R
J	A	T	S	K	S	N	O	N	I	D	T	M	I
H	P	T	R	N	T	U	I	K	O	M	N	S	D
E	N	E	B	O	B	O	R	N	E	E	I	T	G
E	I	E	Y	M	R	C	O	U	N	H	R	I	E
O	T	E	R	E	E	N	F	D	N	T	R	L	T
M	R	N	O	H	A	E	A	N	T	G	R	L	J
F	A	I	B	T	T	F	S	A	M	N	H	H	O
N	M	M	B	A	H	E	N	L	N	I	M	E	N
J	M	I	I	T	M	I	A	A	I	R	S	R	E
L	A	I	C	I	A	R	I	O	N	B	A	E	S
B	I	J	R	T	E	B	L	T	A	E	E	R	N

Memoir of a Snail
Last Breath
I Am Martin Parr
Bring Them Down
The Monkey

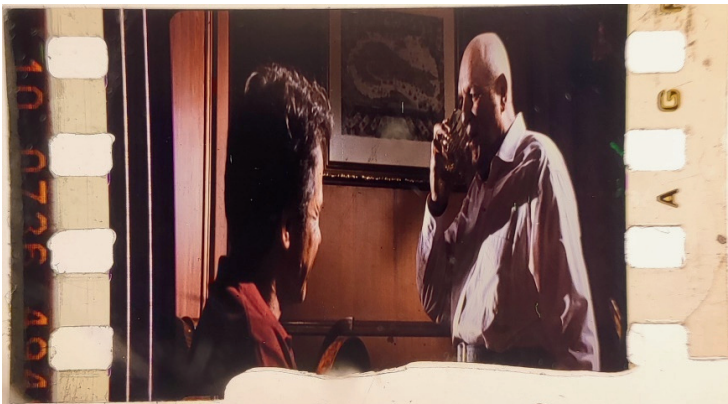
Bridget Jones
I'm Still Here
To a Land Unknown
Brief Encounter

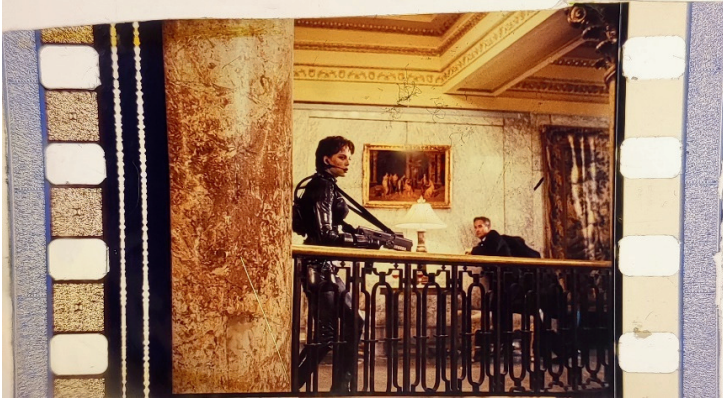
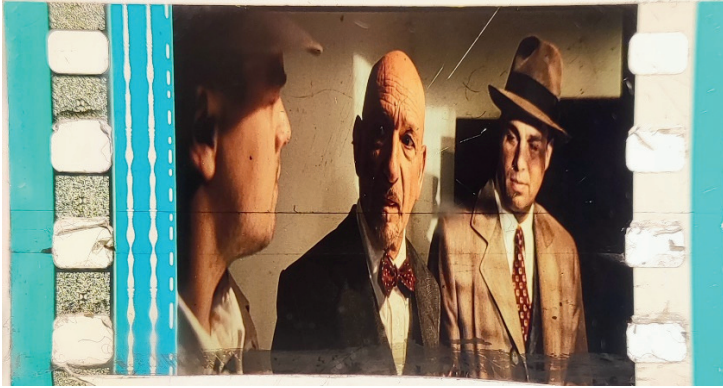
35mm FILM QUIZ

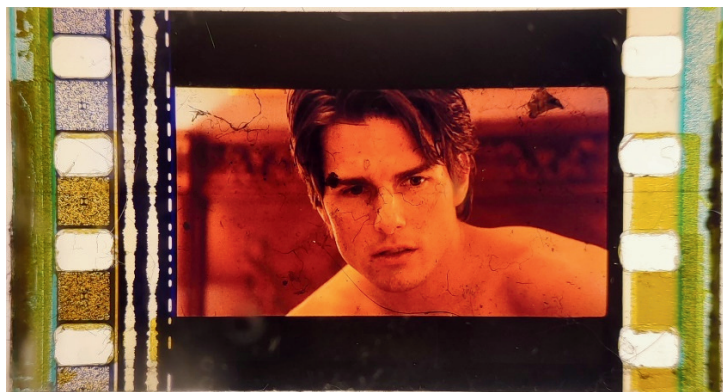
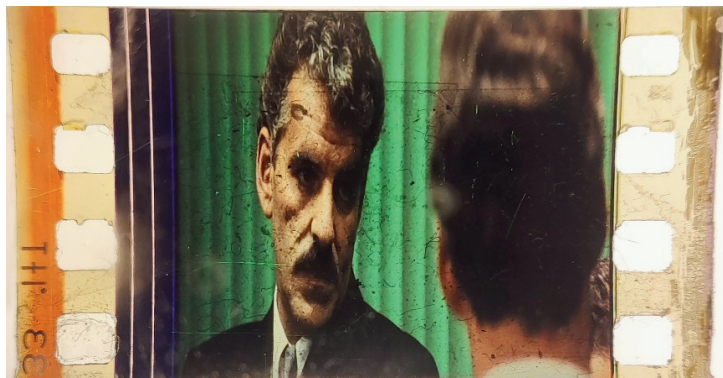
“For a while now, I have been collecting all the broken film cells that occasionally need trimming out of 35mm prints.

But, what to do with them? Well, I have made them into a picture quiz. Just from the single cell, how many can you name? Maybe you know them all... Some are fairly obvious, some nearly impossible!”

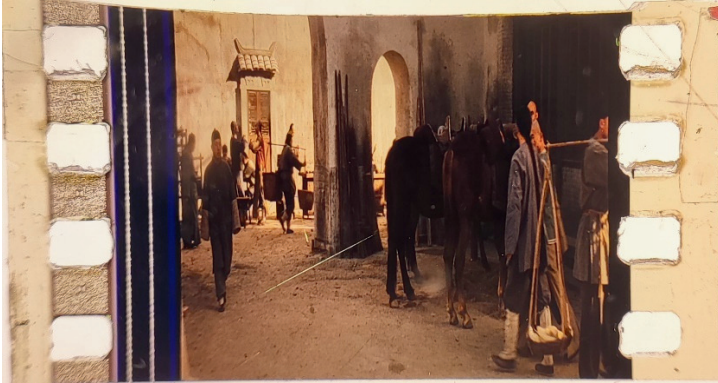
- Adam, Tyneside Cinema Projectionist













**VALENTINESIDE
RIGHT PLACE, RIGHT TIME**

Spanning decades and continents, these ravishing romantic escapes authentically capture a transportive sense of place, whilst thoughtfully reflecting on the transience of getaways, relationships and time itself – with a dreamlike detour down the nightmarish underbelly of LA in tribute to the late titan of cinema, David Lynch.

Stamp your cinematic passport at Tyneside Cinema this February (available at box office!), your one-stop destination for the ultimate ValenTyneside.



Weekend



18 | 1hr 37m | Screening 4 + 12 Feb

An authentic queer cinema revelation from director Andrew Haigh (*All of Us Strangers*), this emotionally candid portrait of fleeting romance observes the aftermath of a one-night stand for two disparate souls (Tom Cullen and Chris New).



Lost In Translation



15 | 1hr 41m | Screening 9 + 13 Feb

Bill Murray and Scarlett Johansson lead Sofia Coppola's dreamy, melancholy romantic dramedy, as two wandering souls forge a transformative emotional bond upon meeting in a Tokyo hotel.



Mulholland Drive



15 | 2hrs 27m | Screening 13 + 20 Feb | More Dates Soon

The American dream spirals into an uncanny nightmare in the late David Lynch's enigmatic tinsel town fever dream masterpiece, as aspiring movie star Betty Elms (Naomi Watts) - arriving in the bright lights of Hollywood - crosses paths with a mysterious woman afflicted by amnesia.

VALENTINESIDE



Brief Encounter (80th Anniversary)



PG | 1hr 27m | Screening 14 + 17 Feb

Returning to the Tyneside in celebration of its 80th anniversary, David Lean's classic wartime romantic drama charts the forbidden love affair between suburban housewife Celia Johnson and married doctor Trevor Howard after a chance meeting at a railway station.



Before Sunset



15 | 1hr 20m | Screening 16 + 19 Feb

In this spellbinding second instalment of Richard Linklater's beloved *Before* trilogy, Jesse and Céline (Ethan Hawke and Julie Delpy) are reunited for a contemplative day around Paris, some nine years after their halcyon meet-cute.



Chungking Express



12A | 1hr 42m | Screening 14 + 18 Feb

Wong Kar Wai's breakout film weaves together the stories of two lovelorn cops in early 90s Hong Kong, creating one of the decade's most woozily romantic masterpieces.



Lust, Caution (35mm)



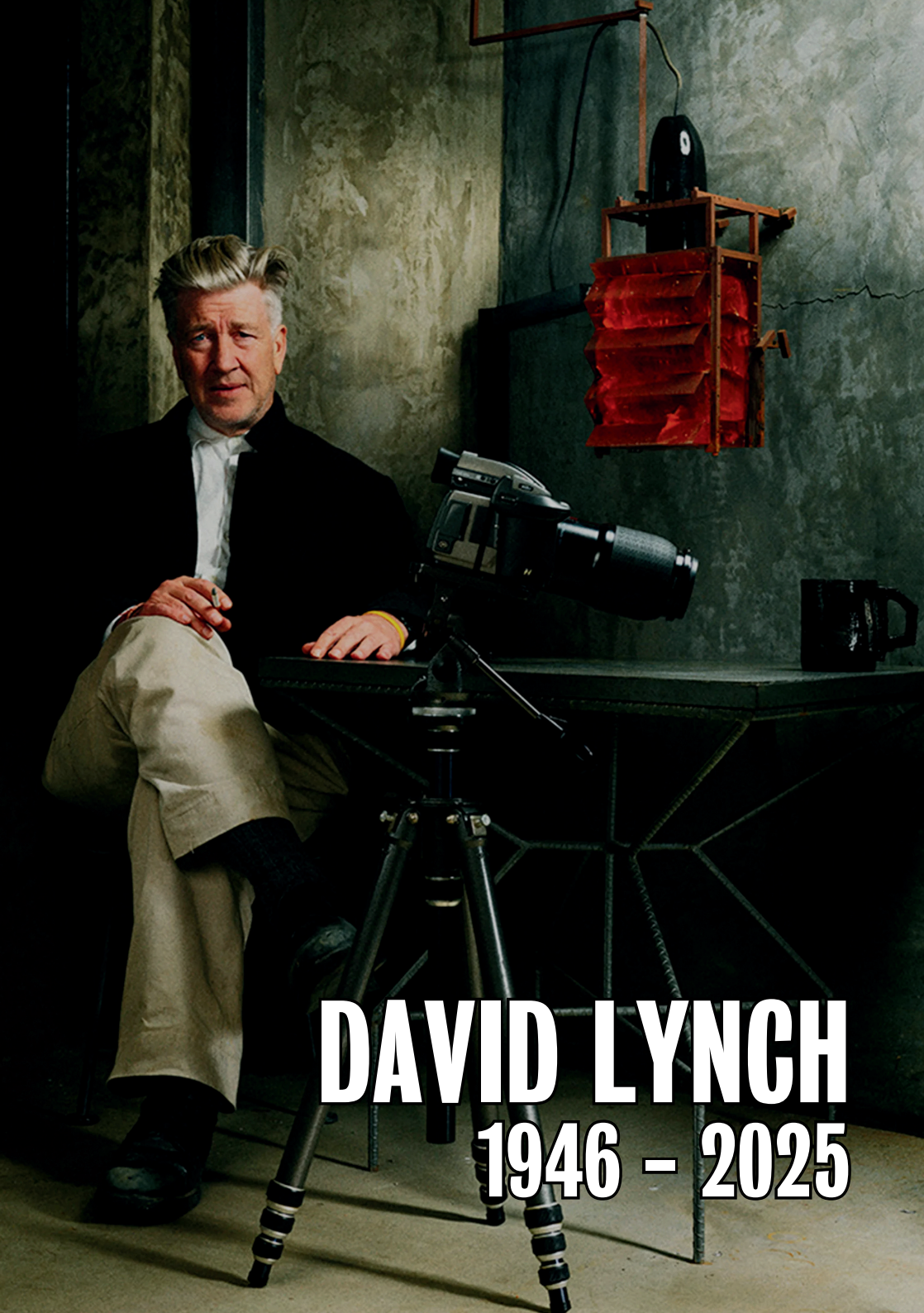
18 | 2hrs 38m | Screening 17 + 18 Feb

This sensually provocative espionage romance from master director Ang Lee (*Brokeback Mountain*) transports us to wartime Shanghai, as the worlds of a young woman (Tang Wei, *Decision to Leave*) and an intelligence agent (Tony Leung, *In the Mood for Love*) become dangerously intertwined.

MAKE A FULL DATE NIGHT OF IT WITH TYNESIDE BAR CAFE'S ITALIAN-INSPIRED MENU

2 courses for £20, 3 courses for £25

To book, email hospitalityenquiries@tynesidecinema.co.uk



DAVID LYNCH
1946 - 2025

DAVID LYNCH: DREAM WEAVER

A retrospective tribute screening the complete cinematic Lynch until April.



Eraserhead



18 | 1hr 29m | Screening 6 Feb | More dates soon

This 1977-defining 'Midnight Movie' was also the infamously surreal birth of one of the most influential careers in modern cinema: behold, David Lynch's otherworldly debut *Eraserhead*.



Mulholland Drive



15 | 2hrs 27m | Screening 13 Feb + 20 Feb

Justifiably revered as a modern classic, David Lynch's dark dream of Hollywood is a noir-inflected and surrealist descent into the American unconscious; a damaged puzzle that slips unsolved between the mirage of identity and the poisoned fairy tales of success.



Wild at Heart



18 | 2hrs 5m | Screening 14 Feb + 18 Feb

David Lynch's deranged road trip into the American psyche is, at its troubled heart, a deliriously unhinged love story, led by the formidable duo of Nicolas Cage and Laura Dern.



The Elephant Man



12A | 2hr 3m | Screening 22 Feb + 3 Mar

John Hurt gives an astonishingly moving central performance in this heart-rending 1980 biopic from David Lynch, based on the life of Joseph Merrick, who was devastatingly ostracised by society in 19th-century London for his disfigurement.



Blue Velvet (35mm)



18 | 2hrs 1m | Screening 9 + 13 Mar

David Lynch's intoxicatingly unsettling neo-noir mystery follows a young college student's submergence into a nightmarish underworld of sex and violence, after discovering a human ear in his once-idyllic neighbourhood.



Dune (1984)



12A | 2hrs 16m | Screening 17 + 26 Mar

David Lynch's now-cult-classic 1984 adaptation of Frank Herbert's seminal sci-fi series evidenced the vast challenges of adapting the unadaptable in gloriously ambitious, utterly inimitable style.



Lost Highway



15 | 2hrs 14m | Screening 21 Mar + 1 Apr

"We've met before, haven't we?"

A tortured jazz musician finds himself caught up in a game of murder, confused identities, and a femme fatale, in David Lynch's 1997 masterpiece that would pave the way for *Mulholland Drive*.



Twin Peaks: Fire Walk with Me



15 | Runtime 2hrs 9m | Screening 11 + 16 Apr

David Lynch's ferocious feature sequel/prequel to his beloved television show *Twin Peaks* recounts the final days of Laura Palmer (Sheryl Lee). The result is scary as hell, and might just be Lynch's greatest film.

DAVID LYNCH: DREAM WEAVER



Inland Empire (35mm)

15 | 3hrs | Screening 18 + 22 Apr

David Lynch's nightmarish experimental digital thriller follows the spiralling experience of actress Nikki Grace (Laura Dern) on a doomed Hollywood production, as reality and fiction become indistinguishable.



The Straight Story (35mm)

U | 1hr 52m | Screening 27 + 29 Apr

An understated, deeply moving marvel of human connection and familial resilience from the late David Lynch, *The Straight Story* charts the transformative journey of septuagenarian Alvin Straight (Richard Farnsworth), who travels across state lines via tractor to visit his estranged brother.



The Short Films of David Lynch

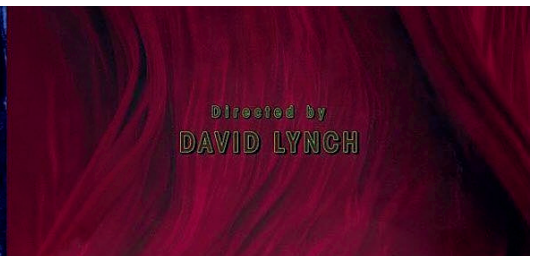
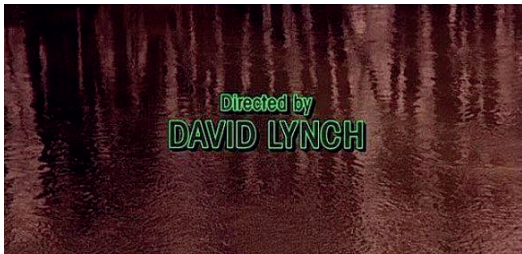
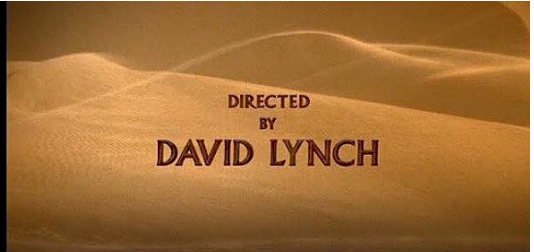
15 | 1hr 22m | Screening 2 + 10 Apr

A special programme of rarely seen short films by David Lynch covering the period 1967-1994, *The Short Films of David Lynch* tracks the evolution of a cinematic genius, starting three years before production began on *Eraserhead*, through the production of *Lost Highway* in 1994, and up to the early 2000s.



FEBRUARY TRIVIA

Do you know which film these 'Directed by David Lynch' title cards are from?







THE MEANING BEHIND THE FASHION IN MULHOLLAND DRIVE

by Emily Duff

David Lynch's mind-bending filmography consistently leaves no detail unnoticed. Throughout his career, fashion played a pivotal role from his signature look, including suspenders and a white shirt with no tie, to the thoughtful styling of iconic characters such as Dale Cooper's infamous trench overcoat in *Twin Peaks*.


In *Mulholland Drive*, stereotypes play a huge part, with the cast embodying common tropes and the era's Y2K style, seen especially in Naomi Watts's Betty. Introduced as the quintessential embodiment of optimism, and naivety, her wardrobe is dominated by soft pinks and pristine whites, reflecting a preppy and meticulously tidy aesthetic. She wears girlish pink robes and prudish high-neck tops, a choice that underscores her initial purity and the idealistic expectations she has on her arrival to Hollywood. As noted by *Vogue*, Lynch's use of costumes often reflects his fascination with the uncanny and the contrast between outward perfection and hidden darkness. This is regularly seen in elements that are subtly unusual, like Betty's clothes often appearing slightly too small, perhaps harking at her childishness or a desire to fit in where she does not.

In stark contrast, Betty's alter ego, Diane, presents a more dishevelled appearance. Her choppy hair is paired with a wardrobe palette of greys and off-whites, with her robe instead being a dirtied beige shade, mirroring her messy reality as a result of her crushed Hollywood dreams.

Each outfit, whether it's Rita's iconic strappy LBD (Little Black Dress) or Betty's tight pink cardigan, contribute to the 'Lynchian' atmosphere. Through these deliberate wardrobe choices, Lynch asks his audience to question the dangerous allure of Hollywood.

***Mulholland Drive* plays at Tyneside Cinema from 13 February.**

Emily is Tyneside Cinema's Marketing Coordinator, read the full article at tynesidecinema.co.uk/news.

A young woman with short, dark, straight hair is shown from the chest up, looking off to the right with a thoughtful expression. She is wearing a light-colored, possibly beige, sweater. The background is a laundry room with clothes hanging on a line. A blue cloth is hanging on the right, and a white cloth is on the left. The lighting is soft and natural, suggesting an indoor setting with a window. The overall mood is contemplative and quiet.

**THE JAPAN
FOUNDATION
TOURING FILM
PROGRAMME**



Ichiko 市子



Certificate TBC | 2hr 6m | Screening 11 Feb

When Ichiko goes missing, her boyfriend immediately begins to search for her. But he discovers that she's not who he thought she was...



All the Long Nights 夜明けのすべて



Certificate TBC | 1hr 59m | Screening 19 Feb

A woman with debilitating PMS and a man with a severe panic disorder find companionship in one another as they help each other to find their places in society.



Penalty Loop ペナルティループ



Certificate TBC | 1hr 39m | Screening 25 Feb

A man out for bloody revenge finds himself trapped in a time loop with the man he's trying to kill. Will this help him achieve justice?



Bushido 碁盤斬り



Certificate TBC | 2hr 9m | 1 Mar

Now-unemployed samurai Kakunoshin's life was destroyed by a false accusation. Having learned the truth, he sets out to restore his honour through revenge, but this comes at a cost...

SEE SELECTED FILMS FOR £5 EVERY MONDAY
AT TYNESIDE CINEMA

THE JAPAN FOUNDATION TOURING FILM PROGRAMME



The Inugami Family

犬神家の一族

Certificate TBC | 2hr 26m | Screening 6 Mar

Just after World War II, the Inugami family patriarch's death brings a shocking revelation: only one of his grandsons can inherit his fortune, and to do so he must marry outsider Tamayo.



Rude to Love

愛に乱暴

Certificate TBC | 1hr 45m | Screening 11 Mar

Momoko is a housewife leading a seemingly pleasant life, but deep down, her frustration at those around her is close to boiling over into madness...



Ghost Cat Anzu

化け猫あんずちゃん

Certificate TBC | 1hr 37m | Screening 19 Mar

Wishing to see her dead mother again, a young girl sets out on a fantastical adventure accompanied by her grandfather's goofy magical talking cat.



Carmen Comes Home

カルメン故郷に帰る

Certificate TBC | 1hr 26m | Screening 26 Mar

A city girl, stage name Carmen, makes an exuberant return to her village hometown, but her appearance causes a stir among the locals. Can they adjust to Carmen's new moral standards?





A Samurai in Time | 侍タイムスリッパ



12A | 2hr 11m | Screening 31 Mar

A Samurai in Time is a smart, crowd-pleasing comedy centring around a man with a great sense of obligation, and more: behind the laughs, it expertly blends thoughtful character study, sharp cultural observations and a heartfelt tribute to the declining jidaigeki (period drama) industry.

ICE CREAM COMBO



2 FOR
£6



SPECIAL EVENTS

**SOLD
OUT**



Conclave + Peter Straughan Introduction



12A | 2hrs | Saturday 1 Feb

Edward Berger's gripping follow-up to his Oscar-winning adaptation of *All Quiet on the Western Front* is a star-studded psychological religious thriller, following the twisting assignment of Cardinal Lawrence (Ralph Fiennes) as the Church looks to appoint a new Pope.

We are delighted to welcome *Conclave* and *Tinker Tailor Soldier Spy* screenwriter Peter Straughan to introduce his latest film.



The Last Showgirl + Pamela Anderson Q&A

15 | 1hr 25m | Monday 10 Feb

The showstopping cinematic comeback of Pamela Anderson, Gia Coppola's poignant character study shines a spotlight on a Las Vegas dancer whose life unravels after the closure of her long-running revue show.

Don't miss this very special advance screening of *The Last Showgirl* on Monday 10th February, followed by an exclusive recorded Q&A with Pamela Anderson.



Iris Prize: Heroes, Heartbeats and Shorelines



15 | 1hr 10m | Wednesday 26 Feb

A dynamic collection of films that explores identity, transformation, and the unexpected connections that shape us, from superheroes to shorelines.



Macbeth: David Tennant & Cush Jumbo



12A | 1hr 54m | 5 + 12 Feb

David Tennant and Cush Jumbo lead a stellar cast in a new 5-star production of Shakespeare's *Macbeth*, filmed live at the Donmar Warehouse in London. Unsettling intimacy and brutal action combine at breakneck speed as Max Webster directs this tragic tale of love, murder, and nature's power of renewal.



Twilight Saga Marathon



12A | 11hrs 45mins | Saturday 8 Feb

Hold on tight spidermonkey, because we're gearing up for a comeback a decade in the making.

The endlessly memeable, teenage heart-rending *Twilight* franchise changed the world 15 years ago. Now, we're stepping out into the sunlight with a glittering all-day retrospective of the entire saga.

BECOME A FRIEND OF TYNESIDE CINEMA!

Enjoy benefits like free tickets and money off, no booking fees, discounted food and drink, members-only preview screenings, priority booking, and more.



Plus, join Young Tyneside **FREE** if you're aged 15-24



NT Live: The Importance of Being Earnest



Certificate TBC | 3hrs | From Thursday 20 Feb

Three-time Olivier Award-winner Sharon D Clarke is joined by Ncuti Gatwa (*Doctor Who*) in this joyful reimagining of Oscar Wilde's most celebrated comedy.

Max Webster (*Life of Pi*) directs this hilarious story of identity, impersonation, and romance, filmed live from the National Theatre in London.

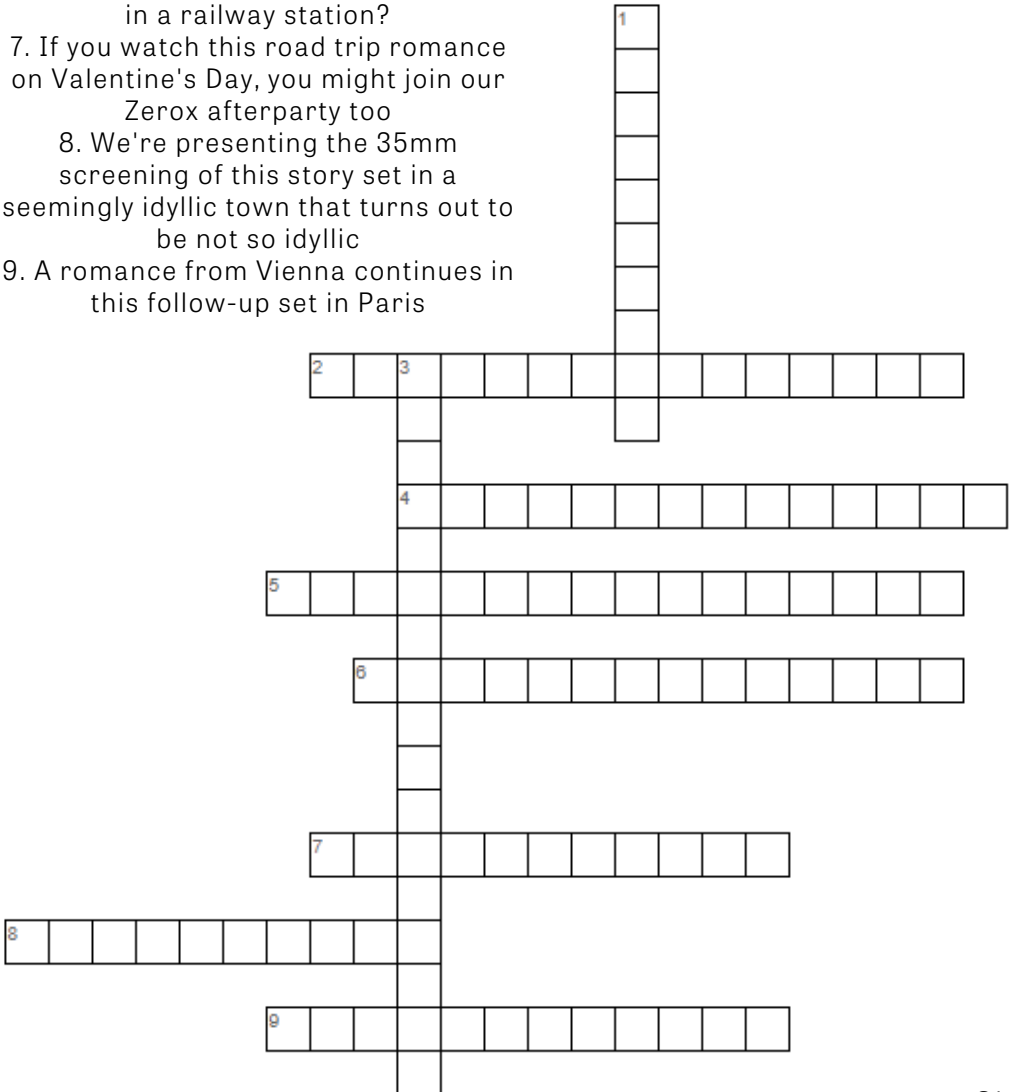
FEBRUARY MOVIE CROSSWORD

Across:

2. For Right Place, Right Time, we go off on an L.A. road in which film?
4. David Lynch's exploration of the true story of a man with a rare condition
5. Travel to Hong Kong to stamp your cinematic passport
6. Which Valentine's Day romance is set in a railway station?
7. If you watch this road trip romance on Valentine's Day, you might join our Zerox afterparty too
8. We're presenting the 35mm screening of this story set in a seemingly idyllic town that turns out to be not so idyllic
9. A romance from Vienna continues in this follow-up set in Paris

Down:

1. David Lynch's surreal black-and-white debut
3. Features one of the most iconic karaoke scenes



10 Pilgrim St, Newcastle upon Tyne NE1 6QG
General Enquiries: boxoffice@tynesidecinema.co.uk

